



The bizhub 754 series proudly joins the bizhub family – named 2013 A3 MFP Product Line of the Year by Buyers Laboratory Inc.



INFO-Palette design incorporates greater convenience for every employee with both software and hardware controls for fast, user-friendly operation.

Konica Minolta's bizhub 754 and 654 represent a new generation of monochrome MFP performance, combining high-speed B&W print and copy output with color scanning to bring any original into your workflow. An award-winning control panel provides multi-touch convenience, like familiar tablets – plus downloadable apps* to make you more productive. Sharing information with greater speed and security, increasing your output while reducing your cost, protecting the environment more effectively – for all these reasons, count on Konica Minolta.

You can swipe, drag and drop, tap and toggle easily between map scroll and tab screen menus.



Wireless and Bluetooth printing from mobile phones, and printing from or saving to USB flash drives for greater convenience and versatility.

The award-winning look and feel of INFO-Palette design.

Our INFO-Palette design earned Konica Minolta the 2013 BLI Line of the Year Award and 2012 Award for "Outstanding Achievement in Control Panel Design" from BLI (Buyers Laboratory) – and once you see it in action, you'll understand why.

Your fingers brush across the big, bright 9" color screen in an intuitive multi-touch interface that works as easily as today's fastest mobile devices. You can swipe, drag and drop, tap and toggle easily between map scroll and tab screen menus. A long tap displays the next set of operating menus. Transparent menus let you see through to a lower level, so you always know where you are. You can simply touch a file stored in a User Box, drag it and release it in the print, store or send command area – even use two fingers to pinch in and out to enlarge or reduce a preview screen or rotate images.*

On the screen, pop-up windows prompt your next steps. Simplified menus reduce the number of steps in every command sequence, with icons that can be customized to reflect the operations you use most often. Instead of tapping a keyboard icon, you can bring up a pop-up alphanumeric keyboard simply by pressing the command field in which text will be entered. An improved soft 10-key pad makes numerical input easier. And the screen tilts from 23° to 55° for Section 508 compliance – so all the information you need is visible at a glance, from any angle, with enhanced resolution for previewing documents before you print.

You'll also have access to downloadable apps* – applications linking your bizhub MFP to on-board utilities and web-based software that help you work faster and smarter. A growing array of apps will make bizhub your portal to future productivity.

An optional 10-key pad combines both software and hardware controls for fast, user-friendly operation and Section 508 compliance. Soft 10-key pad position can be adjusted by end-users for optimal screen viewing. Tactile electrostatic keys provide touch-sensitive control and soft-sound feedback. Orange, blue and white LEDs are also easier to see for the vision-impaired. There's even an optional Voice Guidance system to provide audible control instructions.

Proven expertise in fast-changing professional applications.

In business offices large and small, the speed and power of bizhub document solutions raise the bar in print/copy/scan convenience. For specialized markets, the bizhub 754/654 add important functions and security enhancements for working professionals while protecting sensitive information. And the PageScope® Mobile app enables busy professionals to print remotely from tablets and other mobile devices to networked bizhub MFPs.

The bizhub 754/654 can produce customized content in-house and on-demand, saving time and money. TWAIN scanning and tab printing make it easy to digitize material from multiple sources and create tabbed binders, reports and presentations. Enhanced security protects sensitive information – and each bizhub device also integrates with industry-standard cost-recovery programs.

For scanning and converting hard-copy records to electronic forms in professional applications like healthcare, law and education, the bizhub 754/654 has high-speed scanning, scan-to-folder capability and seamless integration with industry-standard software. To protect client, student or patient confidentiality and comply with FERPA or HIPAA requirements, you'll have the ability to create audit trails and logs of all documents scanned, printed, copied or faxed.



EnvisionIT

INFO-Palette design incorporates greater convenience for every employee with both software and hardware controls for fast, user-friendly operation.

Cost-effective innovations to protect the environment.

Along with proven expertise in serving business and professional document needs, Konica Minolta continually introduces new ways to save energy, reduce paper consumption, minimize pollutants and protect the environment.

With energy-saving modes, rapid warm-up and fast first-copy output times, the bizhub 754/654 achieve among lowest power consumption rates in their class. Their INFO-Palette design features a unique Eco-indicator that enables you to monitor paper, toner and energy usage by device, account or end-user to promote greater cost-consciousness. An optimized power consumption mode can automatically set correct on/off/standby status for workdays, weekends and holidays.

The bizhub 754 and 654 give you even more ways to save. A Print Preview Driver lets you preview documents before you print, reducing the chance of misprints. Blank Paper Removal during printing saves more paper. Konica Minolta's exclusive Simitri® HD toner formulation uses biomass plant-based materials to reduce environmental impact and fuses to paper at lower temperatures to reduce power consumption.

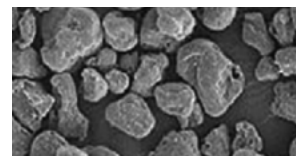
In addition to the built-in savings of bizhub 754/654 operation, our Clean Planet program provides cost-free recycling for all your Konica Minolta consumables – including toner cartridges, developer and drums. And our Eco Vision 2050 project is committed to reducing CO₂ emissions by 80% over 2005 levels – eliminating greenhouse gases that may contribute to global warming. For reducing costs and protecting the environment, you can always count on Konica Minolta.

*Not available at time of launch. Options required for downloadable apps.



Both bizhub models feature fast dual-scanning document feeders that enable you to scan both sides of the page in a single pass, handling up to 180 originals per minute.

Konica Minolta's exclusive Simitri HD toner formulation uses smaller and more consistent particles, giving B&W reproductions greater detail and sharper, more legible text at 1200 dpi print resolution.



For high-volume document applications, complementary overflow for print-for-pay and corporate in-plant facilities, the bizhub 754 and 654 get the job done faster and better. High-speed print/copy output handles rising workloads with ease. Standard Dual Scanning gives you an ideal on-ramp for information in both B&W and color. You'll have support for a wide range of media, including oversized and heavy stock – and powerful finishing options let you produce reports, presentations, training manuals, case files, course content, health information and human resource documents in-house and on-demand.

bizhub OP: our exclusive approach to MFP performance.

With bizhub OP (Open Platform) technology, Konica Minolta document solutions deliver an ideal balance of power and simplicity. Fast internal processing with a consistent control panel interface makes even first-time users more productive.

The built-in Emperon® print system gives you immediate PCL6/PS3 emulation and native XPS functionality. Universal printer drivers let you manage printing with standard familiar commands. And bizhub Extended Solution Technology (bEST) provides seamless interface with 3rd-party software for business and specialized applications – a significant advantage for legal, educational and healthcare professionals.

True 1200 dpi print resolution reproduces crisp, clean halftone definition and makes text more legible, with type that stands out even against dark backgrounds. Konica Minolta's exclusive Simitri® HD polymerized toner uses smaller, more uniform particles to improve fine detail. And Intelligent Auto Exposure effectively detects and preserves faint thin lines and pale backgrounds. The overall result? The high-quality output you'd expect from devices costing far more, but with simple setup procedures that save time and minimize the need for special training.



The versatile FS-535 and FS-534 Staple Finishers support multiple add-ons giving you finishing capabilities such as hole-punching, booklet-making, and tri-folding.

Color scanning solutions to streamline your workflow.

Along with Standard Dual Scan function, the bizhub 754/654 offers an unsurpassed array of scanning features and benefits – including color scanning, to bring any original into your workflow with greater speed and flexibility.

You can scan directly to Email, FTP, and SMB with simple commands on your bizhub touch-screen panel. User Boxes let you scan and distribute quickly to individuals, departments, workgroups, even projects. Scan-to-PowerPoint converts hard-copy documents to PowerPoint files. Scan-to-Me and Scan-to-Home capabilities add to your convenience and confidentiality. Scanned data can be sent seamlessly to cloud services.* TWAIN scanning from PCs provides a smooth interface with legal and other specialized scanning solutions. And the PageScope Mobile app enables you to send scanned data to mobile devices for use on business trips or in the field.

The optional FK-511 Fax Kit can add a high-volume Super G3 fax to your system, with single or dual-line faxing for all-in-one document productivity. A customized Scan/Fax Destination List speeds distribution by filtering your address searches. You can select from a wide range of scan formats, including PDF, compact PDF, PDF/A, Linear PDF, TIFF, JPEG, XPS (some formats are options). WebDAV support simplifies management of server files and folders.

And using the new Distributed Scan function that's compatible with Windows 7 Servers, you can automate your scanning workflow by sending documents directly to a "Scan Server" set up to follow your instructions. Once again, the advantage is faster, more effective document distribution at a lower cost.

Paper sizes and weights to handle any job requirements.

Because in-house printing requirements keep changing, the bizhub 754/654 can accommodate a wide range of paper sizes and weights. Tab Printing lets you print tabbed pages from the multiple bypass tray – even use interleave function to insert tabs within the body of your document, for producing human resource packets, legal or educational binders and training or instruction manuals.

Four standard paper drawers give you 3,650-sheet capacity. Add the LU-301 Large Capacity Cassette, and you can load up to 6,650 sheets for long unattended print/copy runs. Standard 100% duplex productivity at rated engine speed improves productivity to meet tight deadlines. And built-in technology allows you to identify print users, restrict or limit access, and control print/copy costs more effectively in busy public access areas of any government bureau, business office, school, hospital or courthouse.

Modular finishing options for in-house productivity.

With bizhub 754/654, you'll be able to customize a document solution for every need. The FS-535 Staple Finisher performs 100-sheet 3-position stapling, custom sorting and grouping. It accepts the SD-512 Saddle-Stitch Unit, to produce booklets up to 80 pages (20 sheets) or create center-fold, half-fold and tri-fold documents. It also accepts the PK-521 Punch Kit for 2/3-hole punching at top or side, the ZU-606 Z-Fold Unit, and the PI-505 Post-Insertor to add preprinted covers or chapter dividers.

The FS-534 Compact Staple Finisher performs 50-sheet stapling and sorting. It accepts the SD-511 Saddle-Stitch Unit for creating up to 80-page booklets and the PK-520 2/3-Hole Punch Kit. For smaller workgroups, branch locations or satellite offices, the OT-503 Output Tray holds prints and copies when a finisher is not required.

Print/copy functions to make each minute more productive.

For high-volume central corporate reproduction departments or data center applications, the bizhub 754 and 654 are built for speed. B&W print/copy output up to 75 ppm (754) and 65 ppm (654) can handle even late-afternoon peak demands. Standard Dual Scanning at up to 180 originals per minute lets you scan both sides of each page in a single pass, even in color when needed – and rapid warm-up and first-copy output time makes each print/copy job move faster.

Along with faster output, you'll have new print functions for greater versatility – including banner printing, Bluetooth printing from mobile phones, and printing from or saving to flash-memory devices via a convenient USB connector. You can take advantage of cloud services* like Google, SharePoint and Office 365 for off-site storage of documents and programs. Office Open XML Support lets you print docx, xlsx and pptx file formats.

You can save time with Carbon Copy printing, outputting the same data continuously from multiple paper trays in different paper types and sizes. With "Single Sign-On" and Active Directory Authentication, your bizhub MFP can be accessed without re-entering your password if authentication was performed at the server when your PC was booted. And the bizhub 754 and 654 have an accessible paper path with more visible parts to improve ease of servicing.

*Not available at time of launch. Options required.

With bizhub 754 and 654, you'll have multiple options to meet current needs and prepare for future opportunities. You can download apps* directly to your bizhub, select i-Options to expand your productivity, and add security enhancements to protect sensitive information. Seamless software integration also powers your productivity with a growing array of 3rd-party business software, including document scanning and management solutions, account tracking, cost recovery, and industry-standard programs for healthcare, education, law and other specialized applications.

With the bizhub MarketPlace your bizhub MFP can become even more powerful by downloading bizhub apps – letting you add new functionality, enhance your connectivity and improve your workflow.

The bizhub MarketPlace*: apps to make you more productive.

Introducing the bizhub MarketPlace: your source for downloadable apps that give you direct access to personal and professional information whenever you need it, right on your bizhub MFP control panel screen. You can access bizhub apps at the touch of a button and have them stream to your bizhub display throughout the day.

With easy-to-use apps, you'll be able to view specialized applications on web-enabled bizhub devices. You can verify bizhub SECURE status, order Clean Planet recycling boxes and labels, and connect to Microsoft SharePoint servers and Google sites without leaving your bizhub. You can also check Email, receive Twitter and RSS feeds, distribute legal information, print a variety of forms from stored templates, get stock quotes, weather updates and more.

With new apps being developed on a continual basis, you'll have a steady stream of cutting-edge technology to empower your bizhub and enhance your workday.

i-Option kits to expand your bizhub functionality.

In addition to downloadable apps, i-Option kits increase the power of your bizhub MFP. LK-101 v3 gives you a web browser. LK-102 v3 combines PDF/A (1a/1b) formatting and AES 128-bit PDF encryption.

You can add LK-104 v3 for Voice Guidance operation, LK-105 v3 to create Searchable PDF files and locate specific text references, and LK-106, 107 and 108 for Bar Code Font, Unicode Font and OCR Font support. With all these customizing choices, your bizhub will be able handle information in any form that suits your workflow.

*Not available at time of launch.
Options required for downloadable apps.

Enhanced security to safeguard documents and devices.

In the digital era, electronic documents require additional security. Government, healthcare and legal applications must meet the highest standards in protecting the rights of citizens and the privacy of patients and clients. Educational institutions must safeguard student confidentiality and restrict access to customized course content.

To meet or exceed these needs, the bizhub 754 and 654 are currently in evaluation to meet strict ISO 15408 security standards – and offer a full array of standard safeguards as well as advanced options like Biometric Authentication, input for HID Proximity Cards, iClass Cards and Magnetic Stripe Cards, and CAC/PIV Card* support.

Restricting access to print/copy devices is another key concern. With bizhub SECURE, your service provider can initiate a powerful level of extra protections to guard your bizhub from unauthorized operation. Encrypted PDF workflow protects information passing from PCs to networked bizhub devices. IP filtering registers IP addresses of the PCs on your network. And PageScope Enterprise Suite provides server-based authentication and account tracking, so you'll know when prints or copies were made and who made them.

An optional Copy Guard system requires password access to make copies. HDD Lock applies password protection to your bizhub hard disk drive. Job Erase function automatically overwrites your HDD up to three times, meeting the criteria of DoD 55220.22-M (Department of Defense) and NAVSO P-5239-26 (US Navy). And when your bizhub is reassigned to another location or removed from service, HDD Sanitizing can overwrite data in eight different modes so no sensitive information can be compromised.

The bizhub 754 & 654 offer a full array of standard safeguards as well as advanced options like Biometric Authentication Unit, HID Proximity Cards, and other powerful options to guard your bizhub from unauthorized use.

Greater IT control with PageScope software.

In addition to the server-based authentication and account tracking capabilities of PageScope Enterprise Suite, the bizhub 754 and 654 support a full array of PageScope software for managing documents and devices.

PageScope Web Connection and PageScope Net Care Device Manager enable individual users and IT administrators to manage multiple devices from a single point. PageScope Print Status Notifier provides automatic alerts to speed your workflow. PageScope Data Administrator™ handles addresses, passwords, and accounts with ease – and PageScope Box Operator: download and access scanned User Box data from your PC.

bEST design for seamless 3rd-party software integration.

With INFO-Palette design, the bizhub 754/654 represent a breakthrough in MFP value and performance. PageScope software expands the range of bizhub functions. To complete the picture, Konica Minolta's bizhub Extended Software Technology (bEST) allows seamless integration with software programs from 3rd-party developers – software that speeds business workflow, manages print output, performs account tracking and cost-recovery, create direct-mail promotions and more.

In software applications, an Internal Web Server/Browser (IWS) eliminates the need for external servers. Seamless integration, simple operation, customized control – it all helps make your bizhub 754/654 the ideal platform for incorporating future software innovations.



Konica Minolta's exclusive PageScope software can save time in document printing, device setup and administrator management, creating overall system savings that benefit your bottom line.

Konica Minolta: an industry leader in service and support. With over 38,000 worldwide employees and cutting-edge research programs, Konica Minolta Business Solutions U.S.A., Inc., is a leader in document imaging. In 2012, for the fifth straight year, Konica Minolta has been recognized as the #1 Brand for Customer Loyalty in the MFP Office Copier Market by Brand Keys. We've also earned "Line of the Year" (awarded 3 years in a row – 2011, 2012, 2013) and "Solutions of the Year" awards from BLI. We're proud of our record of achievement – and we invite you to learn first-hand why you can count on Konica Minolta. For more information please visit our website: www.CountOnKonicaMinolta.com



* Not available at time of launch.

bizhub 754/654

MONOCHROME PRINTER/COPIER/SCANNER/FAX

bizhub 754

bizhub 654

SPECIFICATIONS

Type	Printer/Copier/Scanner with Stationary Platen	
Toner System	Simitri® HD Toner with Biomass	
Maximum Monthly Duty Cycle (pages)*	300,000 pages	300,000 pages
Print / Copy Speed (Letter, portrait)	75 ppm	65 ppm
Dual Scanner Document Feeder	Duplex Speed: 180 opm, Simplex Speed: 90 opm, Paper Capacity: 150 Sheets, Paper Size: 5.5" x 8.5" to 11" x 17", Paper Weight: Single-Sided/Double-Sided: 9.25 lb. bond to 55.75 lb. bond, Mixed Original: 13.5 lb. bond to 34 lb. bond	
Power Requirements / Consumption	120V, 60Hz / Less than 2,100W	
Dimensions / Weight	25.5" (W) x 31.5" (D) x 45.5" (H) (with control panel) / 487.25 lb.	

COPY

Warm-up Time / First Copy Time	Less than 22 seconds / 3.6 seconds or less	Less than 22 seconds / 3.7 seconds or less
Copy Resolution / Quantity	600 x 600 dpi / 1-9,999	
Magnification	Zoom range: 25% - 400%, 0.1% increments, Preset reduction: 78.5%, 73.3%, 64.7%, 50.0%, Preset enlargement: 121.4%, 129.4%, 154.5%, 200%	
Copy Exposure Modes	Text (legible text), Text/Photo (clear text and halftones), Photo (optimized for gradations), Map (fine edges and legible text), Dot Matrix (dot matrix or pencil originals), Copied Paper	

PRINT: Emperon Print System with bizhub Extended Solution Technology / Open API

Processor / Memory / Hard Disk Drive	1.2 GHz (MPC8536) / 2 GB (shared copier memory) / 250 GB (shared copier HDD)	
Print Resolution / Grayscale Gradations	600 x 600 dpi (1800 equivalent x 600 dpi) or 1200 x 1200 dpi / 256 shades per pixel	
Page Description Language / Fonts	PCL5e/c, PCL6 (XL v.3.0) Emulation, PS3 (v.3016) Emulation, XPS (XML Paper Specification); PCL: 80 Roman fonts, PostScript 3 Emulation: 137 Roman fonts	
Operating System Compatibility	PCL6/PS3: Windows XP Home (SP1 or later), Windows XP Professional (SP1 or later)**, Windows Vista**, Windows 7***, Windows Server 2003 Standard/Enterprise**, Windows Server 2003 Standard/Enterprise R2**, Windows Server 2008 Standard/Enterprise**, Windows Server 2008 Standard/Enterprise R2; XPS: Windows Vista**, Windows 7***, Windows Server 2008 Standard/Enterprise**, Windows Server 2008 Standard/Enterprise R2; Mac (PS-PPD): OS 9.2, OS X 10.2.8 to 10.8; Mac (Intel): OS X 10.4 to 10.8	
Interface	10 Base-T/100 Base-TX/1000 Base-T, USB 1.1, USB 2.0, USB Host	
Network Protocols	TCP/IP (IPv4/IPv6), BOOTP, ARP, ICMP, DHCP, DHCP v6, AutoIP, SLP, SNMP, FTP, LPR/LPD, RAW Socket, SMB, IPP, HTTP, POP, SMTP, LDAP, NTP, SSL, IPX, AppleTalk, Bonjour, NetBEUI, WebDAV, DPWS, S/MIME, IPsec, DNS, DynamicDNS, LLNMR, LLTD, SSDP, SOAP	

COPY / PRINT FUNCTIONS

Features	Account Track (1,000 accounts), Administration Mode, Auto Duplex, Auto Tray Switching, Bi-Directional Communication, Card Shot, Copy Guard, Copy Modes (Simplex/Duplex, 2-in-1, 4-in-1, 8-in-1, Book, Booklet, Booklet + Bind), Cover Mode, Creative Functions (Mirror Image, XY Zoom, Image Center, Neg./Pos. Reverse, Image Repeat), Encrypted Network Password Printing, Energy Save Mode, Enlarge Display, Erase (Border, Frame, Edge) Mode, Finishing (Group, Sort, Staple, Punch, Half-Fold, Tri-Fold, Center Staple and Fold, Z-Fold*, Post Insertion*), Form Overlay, HDD Encryption, HDD Job Overwrite, HDD Sanitizing, Image Adjustments (Screen Settings), Image Preview (Job Finishing Image Display, Engine Configuration Display), Interrupt, Job List, Job Reserve, Job Skip, LDAP, Mixplex, Mix-Media, MyTab, Non-Image Area Erase, OHP Interleaving, Password Copy, Program/Recall Jobs, Paper Type Selection (Normal, Thick 1/1+, Thick 2, Thick 3, Thick 4), Print Modes (Simplex/Duplex, 2-in-1, 4-in-1, 6-in-1, 9-in-1, 16-in-1, Booklet, Booklet + Bind), Print from USB, Proof Copy, Secure Printing, Separate Scan, Text Enhancement, User Authentication (Up to 20 Authentication Servers) (Synchronize w/Account Track), User Box Function, Utility (Meter Count, Environment Settings, Default Settings, One-Touch Settings, Check Consumable Life), Watermark, Zoom Selection	
----------	---	--

SCAN

Scan Speed / Resolution	Duplex Scan: 180 opm @ 400 dpi; Simplex Scan: 90 opm @ 400 dpi / 200 dpi, 300 dpi, 400 dpi, 600 dpi	
Scan File Formats / Color Modes	TIFF, PDF, Compact PDF, JPEG, XPS, Compact XPS, PPTX / Auto Color, Full Color, Grayscale, Black & White	
Scan Functions	Scan-to-Email, Scan-to-FTP, Scan-to-HDD (Scan-to-User Box), Scan-to-Me/Scan-to-Home, Scan-to-SMB (Scan-to-Desktop), Scan-to-USB, Scan-to-WebDAV, Distributed Scan Management, Network TWAIN, WS-Scan, Color Internet Fax	

• FK-511 FAX KIT (OPTIONAL)

Compatibility / Compression	Super G3 compatibility, 33.6 Kbps modem speed / MH, MR, MMR, JBIG data compression	
Fax Transmission Speed / Fax Memory	Less than 3 seconds per page (JBIG, standard resolution) / 2 GB (shared print, copy, scan, fax memory)	
Fax Line Mode / Fax Exposure Mode	PSTN, PBX, G3 / Text, Text/Photo, Photo, Dot Matrix	
Fax Functions	Autodialing (2,000 addresses), Auto Memory Reception, Auto Reduction Printing, Broadcasting (maximum 600 locations), Bulletin Board, Duplex Transmission/Reception, F-Code Support, Group Dialing (up to 500 addresses per group / up to 100 groups), Mailbox Transmission/Reception, Memory/Quick Dial, Overseas Transmission, Password Transmission/Reception, PC-Fax, Polling Transmission/Reception, Print Setting or Overnight Reception, Program Dialing (400 programs), Redial, Relay Transmission, Timer Transmission, TSI Routing	
Fax Options	Spare TX-Marker Stamp 2, SP-501 Fax Stamp Unit	

PAPER HANDLING

Original Size	Up to 11" x 17" (scanning/copying), Up to 11" x 17" full bleed on 12" x 18" paper (printing)	
Paper Trays	Tray 1 & 2: 500-sheet (universal cassette)/5.5" x 8.5" to 12" x 18"/14 lb. bond to 140 lb. index; Tray 3: 1,500-sheet (fixed cassette)/8.5" x 11", 5.5" x 8.5", 4" x 6"/14 lb. bond to 140 lb. index; Tray 4: 1,000-sheet (fixed cassette)/8.5" x 11", 5.5" x 8.5", 4" x 6"/14 lb. bond to 140 lb. index; Bypass Tray: 150-sheet bypass/4" x 6" to 12" x 18", 8" x 13"/Banner Paper/ 14 lb. bond to 100 lb. cover up to 300 gsm	
• LU-204 Large Capacity Unit	2,500-sheets/8.5" x 11", 8.5" x 14", 11" x 17", 12" x 18"/16 lb. bond to 140 lb. index	
• LU-301 Large Capacity Unit	3,000-sheets/8.5" x 11"/16 lb. bond to 140 lb. index	
Maximum Paper Capacity	6,650 sheets (total, with options)	

APPLICATIONS

Network & Device Management	PageScope Data Administrator, Driver Packaging Utility, HDD Back-Up Utility, Log Management Utility†	
User Tools	PageScope Web Connection, PageScope Direct Print, PageScope Box Operator, PageScope Print Status Notifier, Copy Protect Utility, Print Utility for Unix	
Management Tools	bizhub vCare support	
• PageScope Enterprise Suite	PageScope Account Manager, PageScope Authentication Manager, PageScope MyPrint Manager, PageScope MyPanel Manager, PageScope Net Care Device Manager (standard)	

• ADDITIONAL OPTIONS

• Authentication / Security Options	AU-102 Biometric Authentication Unit, AU-201H HID Proximity Card Authentication Unit, AU-202H HID iClass Card Authentication Unit, AU-204H Magnetic Stripe Card Reader, AU-211P CAC/PIV Solution†, SC-508 Copy Guard Kit, WT-506 Working Table to support Authentication Devices, MK-735 Internal Mount Kit	
• External Keyboard	KH-102 Keyboard Mount Kit, KP-101 10-Key Pad, EK-604 USB Interface for External Keyboard and Voice Guidance, EK-605 USB Interface for External Keyboard, Bluetooth Support and Voice Guidance	
• i-Option	LK-101 v3 i-Option, LK-102 v3 i-Option, LK-104 v3 i-Option, LK-105 v3 i-Option, LK-106 i-Option, LK-107 i-Option, LK-108 i-Option, UK-204 i-Option Memory Upgrade Kit	
• Finishing	FS-535 100-Sheet Staple Finisher, FS-534 50-Sheet Staple Finisher, JS-602 Job Separator Tray (FS-535), OT-503 Output Tray (Exit Tray), PI-505 Post Inserter†† (FS-535), PK-520 Punch Kit (FS-534), PK-521 Punch Kit (FS-535), SD-511 Saddle Stitcher Kit (FS-534), SD-512 Saddle Stitcher Kit (FS-535), ZU-606 Z-Fold Unit†† (FS-535)	

● OPTIONAL ● STANDARD

*Maximum Monthly Duty Cycle may vary by country.

**Both 32-bit and 64-bit versions supported.

***Windows 7 Home Basic Edition supports 32-bit only.

†Not available at time of launch.

††ZU-606 and PI-505 only available for FS-535.

Konica Minolta Optimized Print Services offers a full suite of device output services and workflow solutions that increase efficiency and control costs. Please contact your authorized Konica Minolta sales representative for details.

© 2013 KONICA MINOLTA BUSINESS SOLUTIONS U.S.A., INC. All rights reserved. Reproduction in whole or in part without written permission is prohibited. Konica Minolta and Count On Konica Minolta are registered trademarks of KONICA MINOLTA HOLDINGS, INC. bizhub and PageScope are trademarks of KONICA MINOLTA BUSINESS TECHNOLOGIES, INC. All other brands and product names are registered trademarks or trademarks of their respective owners.

KONICA MINOLTA BUSINESS SOLUTIONS U.S.A., INC.
100 Williams Drive
Ramsey, NJ 07446
www.CountOnKonicaMinolta.com
www.kmbs.konicaminolta.us



Item #: 754BRO
2/13